



AISI  
HARROW  
BEIJING



# Admissions Quick Guide

## *COURAGE*

so as to innovate and take risks, inspire change for the better; challenge adversity and complacency; make the most of opportunities; and put fear of failure to one side and stay the course, even when it is difficult

## *HONOUR*

so as to do the right thing; have the highest standards and lead by example; take responsibility; and, ultimately, be worthy of the trust of others

## *HUMILITY*

so as to recognize that one's self is a work in progress and that struggling with weaknesses is essential to growth; and become increasingly aware that talent and achievement alone, however impressive, are not sufficient to succeed as a human being

## *FELLOWSHIP*

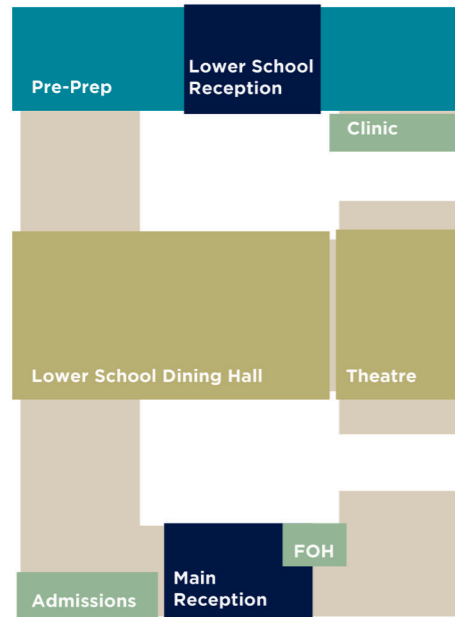
so as to build binding, constructive relationships that help all members of the School community to make a positive contribution; and to believe that the strongest relationships of all are based on faith, hope and love

# Campus Maps

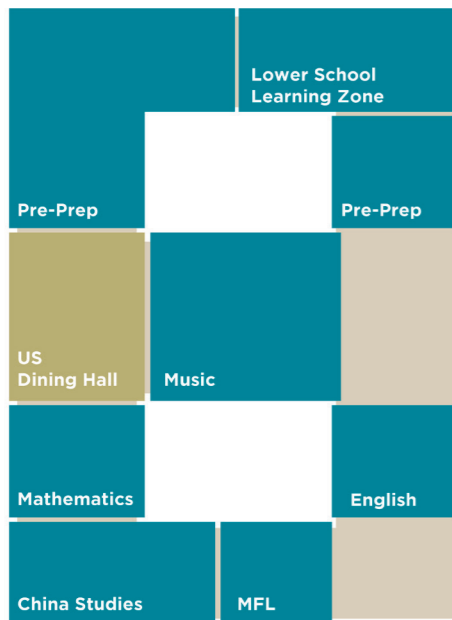
## Hegezhuang Campus

## City Campus

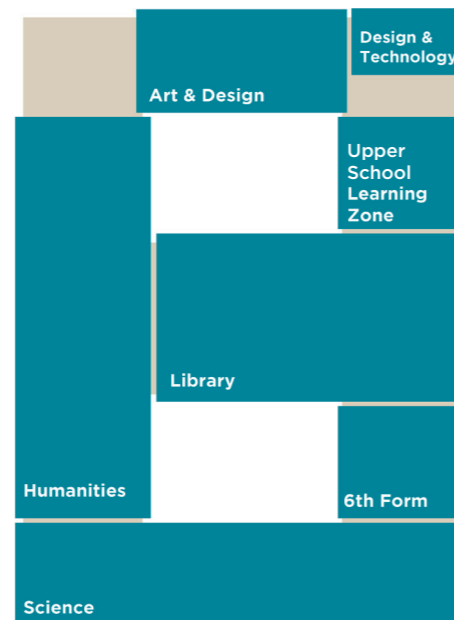
### Ground Floor



### First Floor



### Second Floor

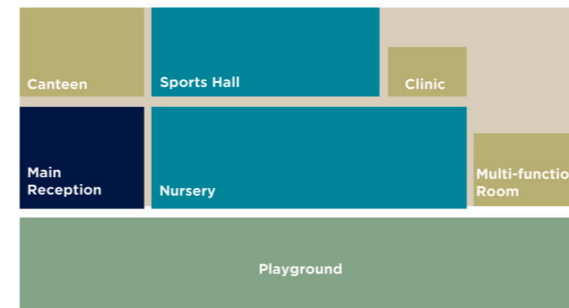


FOH : Friends of Harrow

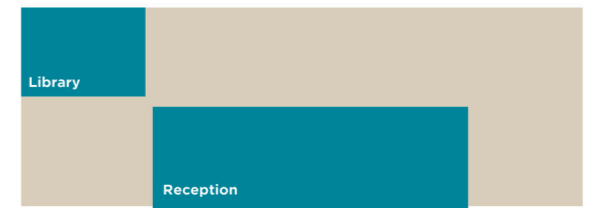
MFL: Modern Foreign Languages

The core sports facilities, including two swimming pools, large indoor gymnasium (including basketball courts), Dance Studios and others are located to the northwest of the central building at Hegezhuang Campus.

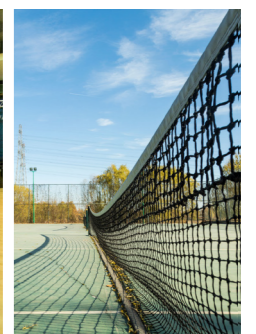
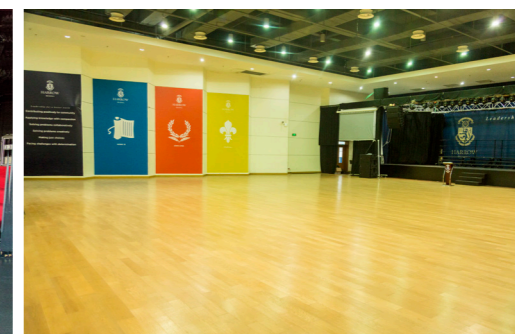
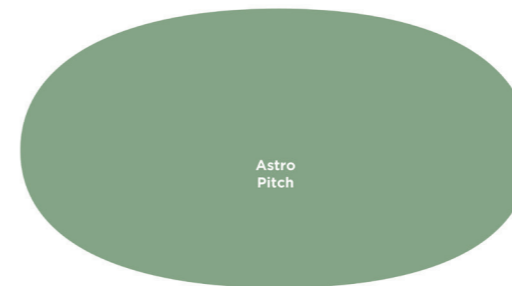
### Ground Floor



### First Floor



### Second Floor



# Age Placement Guide

## 2022/2023

Harrow Beijing	School Section	Year Group (Grade)	Equivalent Grade in Chinese System	Age in 2022/23	Birthdate for academic entry in 2022/2023	
Lower School	City Campus	Nursery	幼儿园 (小班)	3 to 4	1 Sep 2018 - 31 Aug 2019	
		Reception	幼儿园 (中班)	4 to 5	1 Sep 2017 - 31 Aug 2018	
		Year 1	幼儿园 (大班)	5 to 6	1 Sep 2016 - 31 Aug 2017	
	Pre-Prep	Year 2 (Grade 1)	小学一年级	6 to 7	1 Sep 2015 - 31 Aug 2016	
		Year 3 (Grade 2)	小学二年级	7 to 8	1 Sep 2014 - 31 Aug 2015	
		Year 4 (Grade 3)	小学三年级	8 to 9	1 Sep 2013 - 31 Aug 2014	
		Year 5 (Grade 4)	小学四年级	9 to 10	1 Sep 2012 - 31 Aug 2013	
		Prep	Year 6 (Grade 5)	小学五年级	10 to 11	1 Sep 2011 - 31 Aug 2012
			Year 7 (Grade 6)	小学六年级	11 to 12	1 Sep 2010 - 31 Aug 2011
			Year 8 (Grade 7)	初中一年级	12 to 13	1 Sep 2009 - 31 Aug 2010
Upper School	Senior School (GCSEs)	Year 9 (Grade 8)	初中二年级	13 to 14	1 Sep 2008 - 31 Aug 2009	
		Year 10 (Grade 9)	初中三年级	14 to 15	1 Sep 2007 - 31 Aug 2008	
		Year 11 (Grade 10)	高中一年级	15 to 16	1 Sep 2006 - 31 Aug 2007	
	Sixth Form (A-Levels)	Year 12 (Grade 11)	高中二年级	16 to 17	1 Sep 2005 - 31 Aug 2006	
		Year 13 (Grade 12)	高中三年级	17 to 18	1 Sep 2004 - 31 Aug 2005	

## 2023/2024

Harrow Beijing	School Section	Year Group (Grade)	Equivalent Grade in Chinese System	Age in 2023/24	Birthdate for academic entry in 2023/2024
Lower School	City Campus	Nursery	幼儿园 (小班)	3 to 4	1 Sep 2019 - 31 Aug 2020
		Reception	幼儿园 (中班)	4 to 5	1 Sep 2018 - 31 Aug 2019
		Year 1	幼儿园 (大班)	5 to 6	1 Sep 2017 - 31 Aug 2018
	Pre-Prep	Year 2 (Grade 1)	小学一年级	6 to 7	1 Sep 2016 - 31 Aug 2017
		Year 3 (Grade 2)	小学二年级	7 to 8	1 Sep 2015 - 31 Aug 2016
		Year 4 (Grade 3)	小学三年级	8 to 9	1 Sep 2014 - 31 Aug 2015
		Year 5 (Grade 4)	小学四年级	9 to 10	1 Sep 2013 - 31 Aug 2014
	Prep	Year 6 (Grade 5)	小学五年级	10 to 11	1 Sep 2012 - 31 Aug 2013
		Year 7 (Grade 6)	小学六年级	11 to 12	1 Sep 2011 - 31 Aug 2012
		Year 8 (Grade 7)	初中一年级	12 to 13	1 Sep 2010 - 31 Aug 2011
Upper School	Senior School (GCSEs)	Year 9 (Grade 8)	初中二年级	13 to 14	1 Sep 2009 - 31 Aug 2010
		Year 10 (Grade 9)	初中三年级	14 to 15	1 Sep 2008 - 31 Aug 2009
		Year 11 (Grade 10)	高中一年级	15 to 16	1 Sep 2007 - 31 Aug 2008
	Sixth Form (A-Levels)	Year 12 (Grade 11)	高中二年级	16 to 17	1 Sep 2006 - 31 Aug 2007
		Year 13 (Grade 12)	高中三年级	17 to 18	1 Sep 2005 - 31 Aug 2006

# Structure of the School Day

The School Day runs from 08:00 to 15:30 from Monday to Friday. Breakfast Clubs are available for all students; times depend on the student's age and more information is available from Admissions staff.

Lower School		Upper School	
Registration	08:00 to 08:15	Tutor Time	08:00 to 08:15
Period 1	08:15 to 08:55	Period 1	08:15 to 08:55
Period 2	08:55 to 09:35	Period 2	08:55 to 09:35
Period 3	09:35 to 10:15	Period 3	09:35 to 10:15
Break + Physical Exercise	10:15 to 10:40	Break	10:15 to 10:40
Period 4	10:40 to 11:20	Period 4	10:40 to 11:20
Period 5	11:20 to 12:00	Period 5	11:20 to 12:00
Lunch	12:00 to 12:50	Lunch	12:00 to 12:50
Period 6	12:50 to 13:30	Period 6	12:50 to 13:30
Period 7	13:30 to 14:10	Period 7	13:30 to 14:10
Period 8	14:10 to 14:50	Period 8	14:10 to 14:50
Snack + Reading	14:50 to 15:20	Period 9	14:50 to 15:30
Optional LSAs	15:30 to 16:20	Optional LSA Activities	15:30 to 16:20

City Campus - from our Nursery to Year 1 operate a dynamic school day which operates from 8:00 to 15:30. Arrival at school is at 8:00. There are ten periods in the day, two breaks with snacks, and lunch. All students will have the opportunity to nap after lunch in specific sleeping areas. We ask parents to collect children promptly at 15:30 unless they are taking part in LSAs, which finish at 16:30.

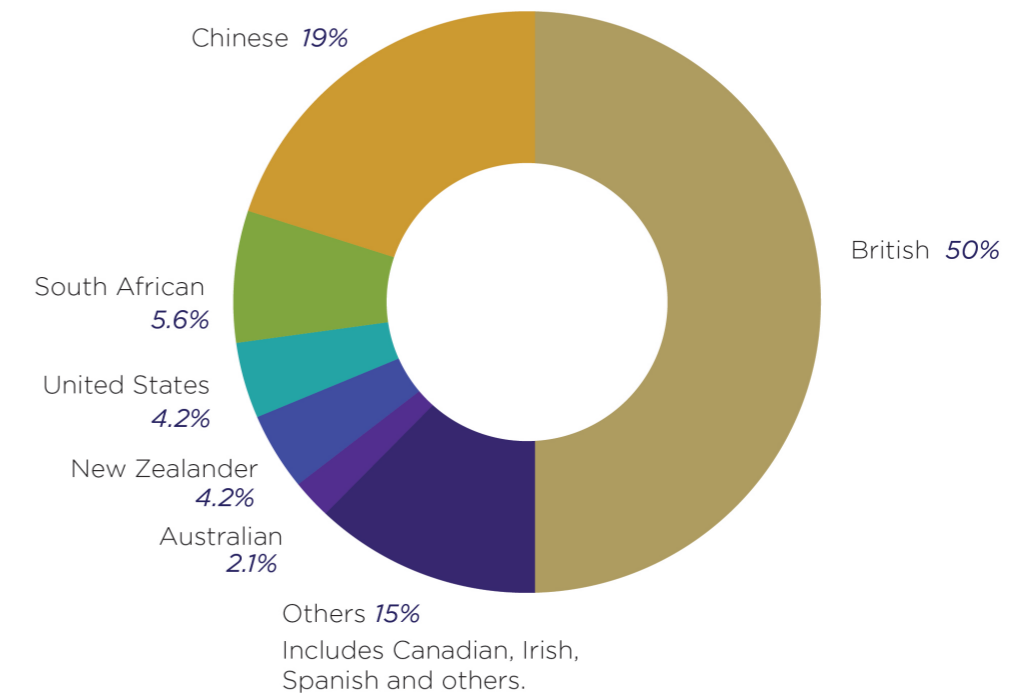
Students in Lower and Upper School take part in holistic studies once per week. This includes exercise activities, flag-raising, assemblies, PSHE/Careers advice, CPT/reading, depending on their year group.

# Class Sizes

Harrow Beijing operates class sizes which are in line with those in international school settings and compare with the other schools within our international Harrow family. Our Admissions team can discuss the exact class sizes related to your children during your visit to the school.

# Teaching Staff Nationalities

Our teaching staff are recruited from the best talent pools around the globe. They are all fully qualified teachers who bring a vast range of experience and life skills to the school. The average teaching experience of our teaching staff is just over 11 years.



Our students undertake both Mandarin and China Studies lessons, delivered by highly experienced and fully qualified Chinese teachers.

# University Destinations

Our students go on to top universities all over the world, although most of our Sixth Form graduates will choose to study in either the United Kingdom or the USA. For students who wish to pursue an Oxford or Cambridge application, preparation begins in the final months of Year 12 and includes seminars, tutoring and interview practice. A sample of our university destinations is shown below:

UNITED KINGDOM	NORTH AMERICA	ASIA PACIFIC
University of Oxford	University of California, Berkeley	University of Sydney
University of Cambridge	University of California, Los Angeles	University of Melbourne
Imperial College London	New York University	University of New South Wales
The London School of Economics and Political Science	University of Pennsylvania	The University of Hong Kong
University College London	Cornell University	The Hong Kong University of Science & Technology
University of the Arts London	Duke University	Korea University
Durham University	Johns Hopkins University	Seoul National University
University of Warwick	University of Southern California	Yonsei University
University of Edinburgh	University of Toronto	Kyoto University
University of Manchester	University of British Columbia	Waseda University

# Admissions: How to Apply

The process of applying to Harrow Beijing will vary depending on the age of your child, but generally we would encourage you to follow this process:

## Visit our School:

We encourage you to attend one of our many Open Days, most of which are held between September and December each year. If you are not able to attend an Open Day, one of the Admissions team will be happy to host your visit at a time which your schedule allows. We request that you reserve an appointment in advance as our staff may not always be able to host unscheduled school visits.

During your visit to the school, you will have the chance to discuss the admissions process with one of our team. They will also take you on a tour of our beautiful campus and facilities. During this tour, you should have the opportunity to meet with our senior academic team to ask any questions you may have. If you would like to meet a specific member of staff during the tour, please let our Admissions team know in advance and they will try to arrange it.

## Submit an Application:

If you choose to apply for a place at Harrow Beijing for your child, you need to start the formal application process. Applying for a place does not guarantee a space, and nor does it involve any commitment from you as a family. However, we would strongly encourage early applications due to the very high levels of interest in our school. We regularly have long waiting lists for places and priority on those waiting lists is dictated by the submission date of your application.

As well as making a payment of a RMB 3,500 registration fee, you will need to complete our online application - which includes the submission of documents - via <https://harrowbeijing.openapply.cn/apply>. Families living in Beijing may be required to submit original

documents either in person or by post.

### For all applicants

- A completed application form, which includes our health declaration form, submitted via our online application form
- A copy of the student's passport information page
- A copy of both parents' passport information page
- One recent passport-style photograph of the student and parents/guardians
- Copies of the student's school reports which cover the past two years (where documents are not already in English or Mandarin, the reports must be officially translated into English and notarized before submission to the school)
- A completed confidential Student Reference Form from a teacher at your child's current full-time school (submitted via our online portal)

### For international applicants :

Copies of each family member's visa/permit page

Payment of the registration fee can be made by bank transfer in RMB only to the following account:

**Bank Name:** Hang Seng Bank Beijing Branch  
恒生銀行（中国）有限公司北京分行

**Account Name:** Harrow International School Beijing  
北京哈罗英国学校

**Account Number:** 531031680020

All payments should include a clear reference to the student's full name and, if available, the relevant invoice number. Proof of payment by WeChat or Alipay should be sent to [accounts@harrowbeijing.cn](mailto:accounts@harrowbeijing.cn), also including a clear reference to the student's full name and/or invoice number.

### Undergo Consultation:

All students will take part in a consultation process which takes place at Harrow Beijing. Children entering our Early Years will spend some time inside the classroom so that our teaching staff can ensure that they are comfortable and confident in a classroom setting. All other students will undertake a consultation process within the school.

Students will then be chosen to move forward to the next stage as appropriate. For entry into Upper School, this will include a meeting with our academic team.

Please note that students seeking entry directly into Year 12 are required to have gained a minimum of 5 x GCSE qualification (or their equivalent) at Grade C or

above. The student must also have achieved Grade B or above in any subject they wish to study at A-Level.

### Offering a Place:

The school will make a formal offer of a place to all suitable students. We aim to make these offers as soon as possible after the consultation process has been concluded. We will try to contact you initially by telephone to discuss the outcome of the consultation process, but where that is not possible, you will be notified by email.

### Accepting the Place:

If you wish to accept the offered place, you will be asked to sign and return the school's Acceptance Form and make a small advance payment of tuition fees within due course. We will guarantee your child's place at the school for two weeks after an offer is made to allow return of the Acceptance Form. If the relevant commitment has not been made by the given deadline, we may offer the place to another student.

## Academic Calendar

### Term Dates 2022/23

The school website can be used to refer to key dates within the school's academic calendar. You can also check a more detailed version of the calendar online at:

<https://www.harrowbeijing.cn/calendar-news-events.html#calendar>

#### Term One 31 Aug 2022 – 20 Dec 2022

Students return to school 31 Aug

Mid-Autumn Festival 12 Sep

National Holiday 1 - 7 Oct

End of Term One 20 Dec

Winter Holiday 21 Dec - 30 Jan

#### Term Two 31 Jan – 7 Jul 2023

Start of Term Two 31 Jan

Tomb Sweeping 5 Apr

Spring Break 24 - 28 Apr

Labour Day Holiday 1 May

Dragon Boat Festival 22 Jun

Last Day of School 7 Jul

Summer Holiday 8 Jul - 31 Aug

## Fees Schedule

### Registration Fee

The registration fee is payable only once at the point of application.

All Students	RMB 3,500
--------------	-----------

Following the offer of a place at Harrow Beijing, in order to guarantee your child's place, you are required to pay RMB 20,000 within two weeks. This amount will be put towards the full tuition fee.

### Annual Tuition Fees

Year Group	Annual Fee
Nursery	RMB 209,676
Reception	RMB 243,930
Year 1	RMB 265,728
Year 2	RMB 279,222
Years 3 to 5	RMB 282,336
Years 6 to 8	RMB 295,830
Years 9 to 11	RMB 309,324
Years 12 to 13	RMB 324,894

### Lunch Fees

All students will receive a hot lunch, while all students will also receive snacks. Families who would like their child to bring food from home each day must seek prior approval from the school. This fee is paid directly to our catering company.

All Students	RMB 6,600
--------------	-----------

### Uniform Fees

All students will receive a set of both the summer and winter uniform, a games kit, sports cap, scarf and school bag. Additional uniform is available from the school shop as required:

All Students	RMB 4,500
--------------	-----------

### Discounts

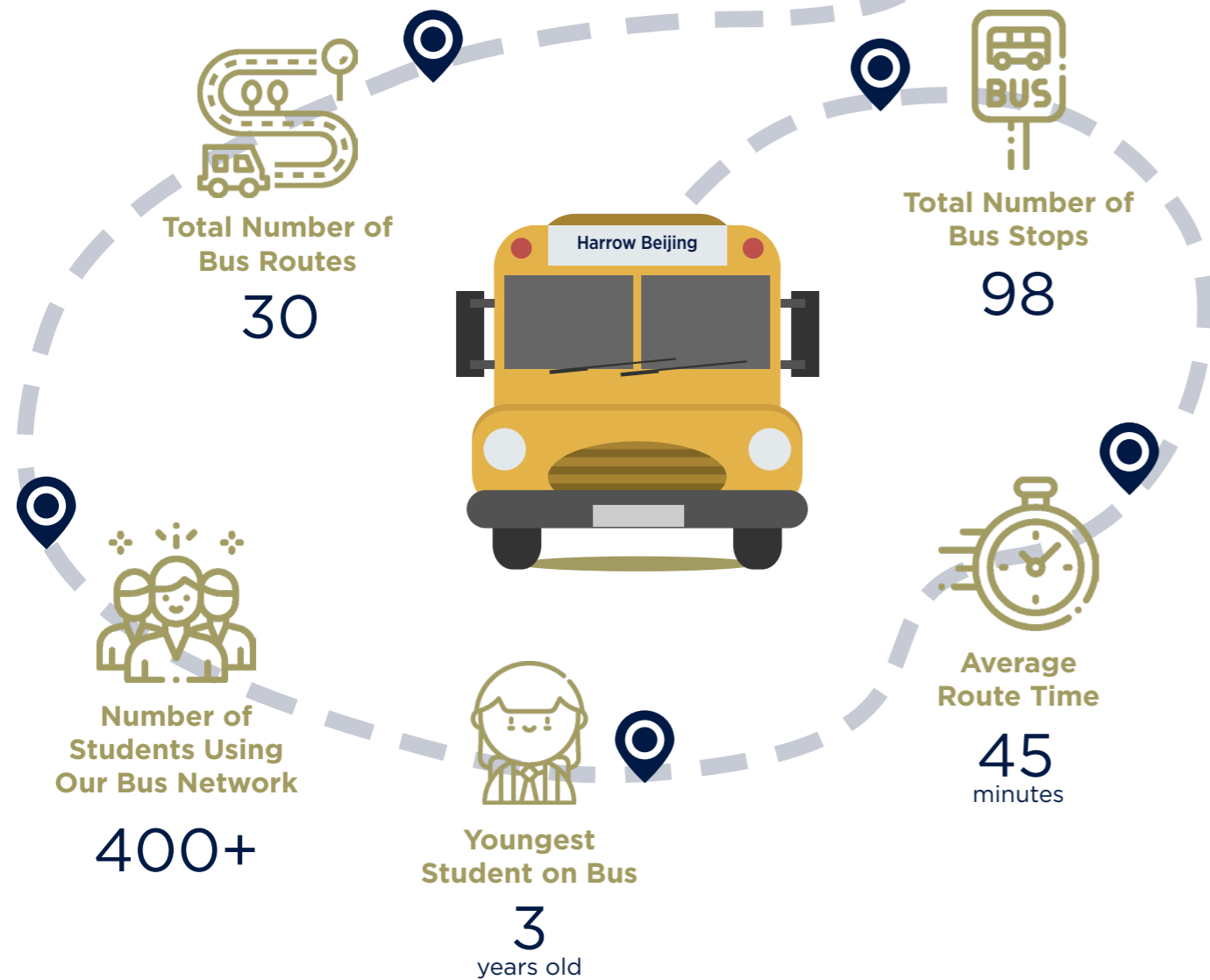
Discounts are available for families with more than one child. The discount always applies to the youngest children in order of birth. Students must be studying at Harrow Beijing at the same time for the discount to be applicable.

2nd Child	5% discount
3rd Child	10% discount
4th and Subsequent Children	15% discount

A copy of the full fee schedule is available on request from either the Admissions or Finance department.

# School Bus Network

We seek to accommodate the transport requirements of all of our families whenever possible. Our network of buses covers a huge area of Beijing. We operate using a set of key collection/drop-off points which means we aren't always able to collect from the gates/doors of every village/compound, although we try to amend our key routes to accommodate as many of our families as possible.



## School Bus Fees

One-way journeys are charged at the same price as round-trip journeys.

To check if we have a collection point close to your home, please contact our Transport Department at [transport@harrowbeijing.cn](mailto:transport@harrowbeijing.cn).

Within 5kms of school	RMB 11,160
Between 5kms and 10kms	RMB 16,560
Between 10kms and 15kms	RMB 18,720
More than 15kms	RMB 19,800

# Leadership in Action

Harrow Beijing's history and tradition of holistic education is evident in our Leadership in Action programme. This encompasses after school activities known as Leadership and Service (LSA), the Extended Learning Programme (ELP) and all the opportunities we offer outside of the classroom with trips, expeditions and retreats. Harrow Beijing is committed to delivering world class opportunities to enrich student lives, developing skills and passions, in preparation for leadership in our global community.

Leadership in Action (LIA) encompasses the School's Core Values - Courage, Honour, Humility and Fellowship, within our special position in China.

The LSA programme is designed to offer opportunities for students in the Arts, Sports, Super Curriculum and Service activities, offering a range of learning opportunities for students to develop skills and build experiences, allowing them to follow their passions while encouraging them to also try something new.

**Sports** / We aim to provide students with a physically challenging, enjoyable and competitive environment that promotes skill development alongside student leadership, teamwork and perseverance. Through sport, we are striving to build a culture of fellowship and exercise for all, whilst seeking excellence. There are competitive opportunities available with ACAMIS, FOBISIA, JISAC and ISAC competitions, locally, nationally and internationally. We also have recreational sports opportunities involving rock climbing, badminton, softball, table tennis and many more activities for all ages.

**Aquatics** / Swimming is a popular activity and parents across the school like their children to have swimming lessons. Due to the high demand, swimming has 3 sessions per day, 5 days a week, as well as some swimming provision on Saturdays throughout the year. As well as curriculum swimming, Harrow Beijing offers a Learn-to-Swim Programme for beginner swimmers. Non-competitive swimmers who are not ready to join the competitive team or want to swim but do not want to compete can swim for fitness. Competitive team training for those swimmers who are proficient and have been selected to compete for the school team as well as the competitive team have daily dry land training before they get into the pool. We are also developing Water Polo as a new sport.

**Super Curriculum** / We are committed to developing the intellectual curiosity and academic ability of our students beyond the measurable outcomes of examination results. Our super-curriculum aims to stretch our students' enquiring minds beyond the structured domains of British curricula to explore and engage with subjects in a broad and deep manner. We aim to provide a wide range of activities that encourage students

to think creatively and critically and have the freedom to independently develop their 'love of learning'. Python Coding, Model United Nations, reading clubs, extensive library facilities, CREST Awards, Kerbal Space programme are but a few of these programmes.

**The Arts** / At Harrow Beijing we recognise the importance of the Arts in our students' intellectual, creative and personal development. Our Arts programme seeks to provide opportunities for students to access new art forms and experiences, to build skills, leadership and confidence, and to extend those with particular ability. The Arts are a core element of the Harrow community and a vital component of our connection with each other, both within and outside the school. With our Show Choir, Apri Catenate, Orchestra, Concert Band, Chinese Ensemble and Jazz Band, there are plenty of opportunities in music. We offer modern dance, ballet, Bollywood performances, sculpting, painting, drawing, polymer clay, stage make up as well as a range of drama productions throughout the year including the Shakespeare plays.

**LAMDA** / LAMDA - The London Academy of Music and Dramatic Art is another popular activity at Harrow Beijing offering many different courses for students to sign up to. LAMDA examinations are not only about achievement through communication, recognising and rewarding the endeavours of each individual, they are also about empowerment. All of the disciplines involved in LAMDA focus on building the ability to express oneself more effectively. The experience and knowledge that pupils gain enrich them in many unique ways by giving increased confidence, improved public

speaking skills, listening and observation techniques, enhanced creative thinking as well as refining brainstorming abilities. All of these techniques are learned in a fun and understated way.

**Community Service** / Service Learning at Harrow Beijing is an experiential education in which learning occurs through a cycle of project actions and reflection as students seek to achieve real objectives for the community and deeper understanding of issues others face. These include the International Award, Harrow TV, the Zhili Society, Best Buddies, Animal Rights, and Service Programmes with Anmin School.

**Out of School Opportunities** / Upper School students can look forward to an annual expedition offering a range of experiences from outward bound trips to art, history and culture in a custom made residential programme with a focus on team building and problem solving. These expeditions may take students further afield, working with well-established companies offering the best experiences in China. Throughout the year, there will be opportunities for academic day trips for students to complete geography field work or science experiments or just to delight in the amazing city of Beijing and all it has to offer from the Great Wall to the Forbidden City. For Lower School Students, Personal Development Week offers them a range of in-school activities and out of school experiences. For the older students, this includes residential trips to the Northern Hills or the Beijing Sailing Centre. We also offer an annual winter sports trip to enjoy skiing and snowboarding.

# Example Student Timetables

To give a rough idea of the kind of school day your child will experience, please see some example timetables for each of the school sections of Harrow Beijing. Note that these are only examples; each student's timetable will differ according to their specific year group and will vary each year.

## Lower School

### Early Years (Reception)

Monday	Phonics	English	Maths	Break	PE	English	Lunch Time	Play Time	Nap Time	Mandarin	Snack	Provision	Optional LSAs
Tuesday		EAD			PE	English			Mandarin	Provision			
Wednesday		English	Mandarin		Maths				Swimming				
Thursday		English	Maths		Provision and Understanding the World				Nap Time	Provision	Snack	Provision	
Friday		English	Maths		Provision and Understanding the World				Provision	Provision	Provision		

### Pre-Prep (Year 3)

Monday	Tutor Time	Assembly	Personal Development	Literacy		Break	Maths		Science	Lunch	Handwriting	Topic	Optional LSAs
Tuesday		Literacy		Maths			Library	PE (Sports)			Topic	Mandarin	
Wednesday		Maths		Literacy			Literacy	Maths	Computing		Topic	Music	
Thursday		Reading		Spelling	Grammar		Drama		Maths		Mandarin	Topic	
Friday		Assembly	Handwriting	Mandarin			Maths		Literacy		PSHE	PE (Sports)	

**Provision:** With the Early Years curriculum, this covers areas such as literacy, art, drama, music, physical education, history and geography.

**EAD:** Expressive Art and Design: This is a strand of our Harrow Early Years curriculum and refers specifically to a child using and exploring different media and materials and being imaginative.

**PSHE:** Personal, Social and Health Education. This is a term used in Harrow Pre-Prep Phase (and above) to describe the skills, knowledge and attributes which pupils develop to manage their lives now and in the future.

**Understanding the World:** This is a strand of our Harrow Early Years curriculum and refers specifically to people and communities, the world around us, and technology.

# Example Student Timetables

To give a rough idea of the kind of school day your child will experience, please see some example timetables for each of the school sections of Harrow Beijing. Note that these are only examples; each student's timetable will differ according to their specific year group and will vary each year.

## Upper School

### Prep (Year 7)

Monday	Tutor Time	History	English	Break	English	Art	Computing	Lunch	PE (Sports)	Maths	LSAs	
Tuesday		Maths	Mandarin		Science	Science	Art			Music	Maths	LSAs
Wednesday		English	Positive Education		Geography	Science	Music		Maths	Mandarin	English	LSAs
Thursday		English			Mandarin	China Studies	Geography			Maths	English	LSAs
Friday		English	Science			Music	History		Mandarin	PE (Sports)	Science	LSAs

### Senior School (Year 9)

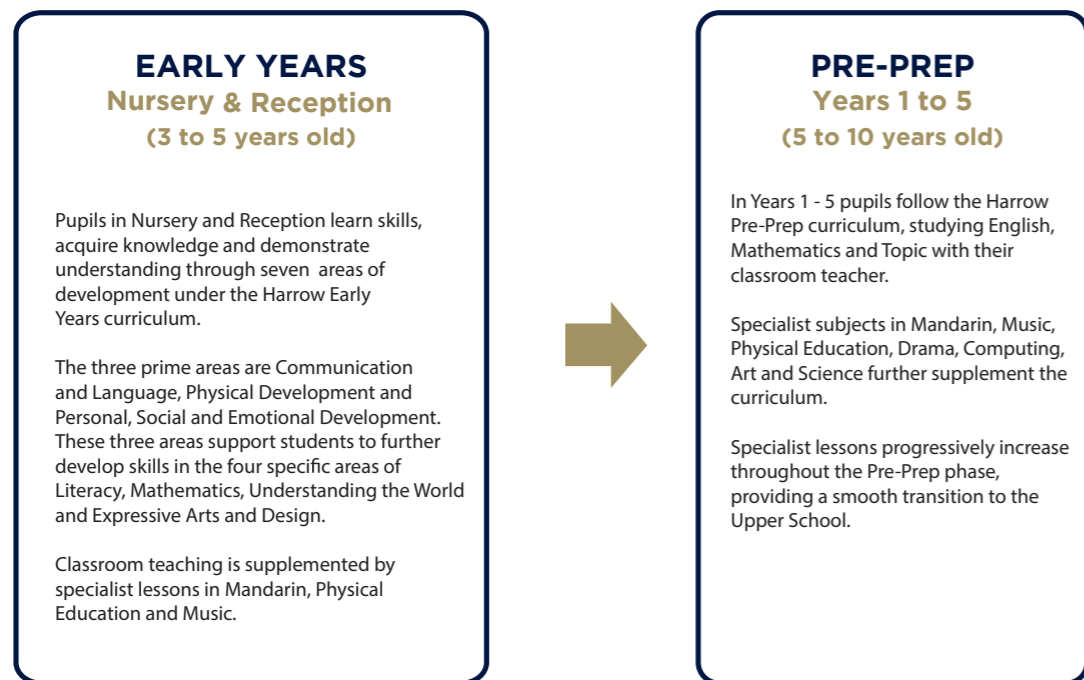
Monday	Tutor Time	Mandarin	Physics	Break	Physics	Drama	English	Lunch	Design & Technology	Maths	LSAs
Tuesday		Biology	History		History	Business Studies			Maths	Maths	LSAs
Wednesday		Maths	Computing		Geography		Drama		PE (Sports)	English	LSAs
Thursday		Spanish	Chemistry		English	Mandarin			Computing	English	LSAs
Friday		China Studies	Spanish		English		Maths		Design & Technology	Science	LSAs

### Sixth Form (Year 12)

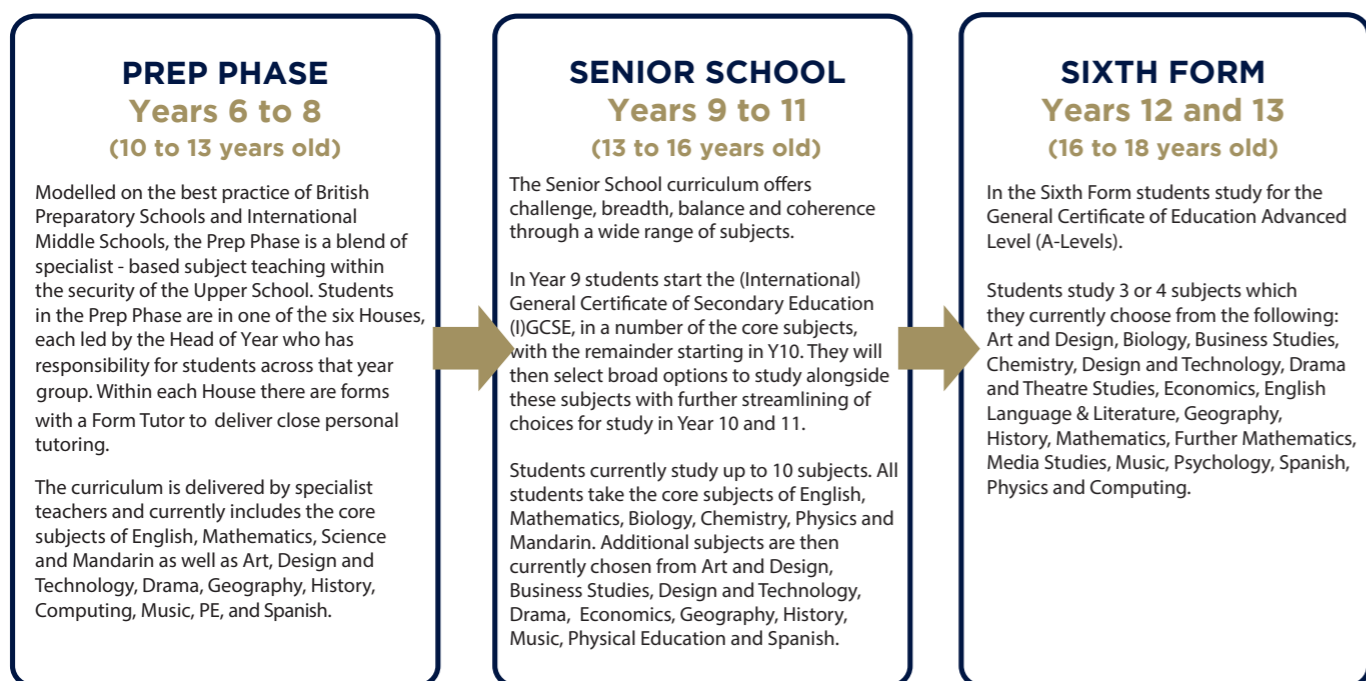
Monday	Tutor Time	PE (Sports)	History	Break	History	English Lit	FREE	Lunch	FREE	Economics	English Lit	
Tuesday		History	FREE		FREE	Economics			FREE	English AP	FREE	
Wednesday		FREE	Economics		English AP	English AP	History		FREE	FREE	Epistemology	
Thursday		FREE			Economics	Studies	English Lit		History	Holistic Studies	Studies	FREE
Friday		Economics	English Lit			English Lit			FREE	FREE	History	Studies

# Academic Progression

## Lower School



## Upper School



### Hegezhuang Campus

Email: [admissions@harrowbeijing.cn](mailto:admissions@harrowbeijing.cn)

Telephone: +86 10 6444 8900

Address: No.287, Hegezhuang Village, Cuigezhuang County, Chaoyang District, Beijing, China 100102

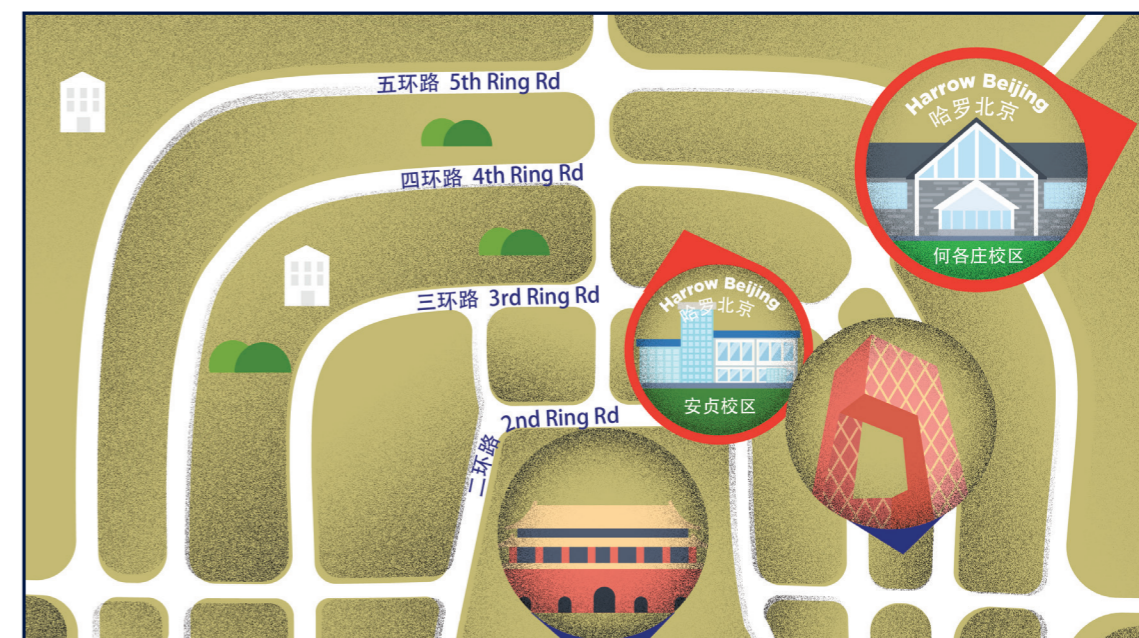


### City Campus

Email: [cityadmissions@harrowbeijing.cn](mailto:cityadmissions@harrowbeijing.cn)

Telephone: +86 10 6444 8100

Address: No. 5, 4th Block, Anzhen Xili, Chaoyang District, Beijing, China 100029



450  
years of education



AISL  
HARROW  
BEIJING

---

[www.harrowbeijing.cn](http://www.harrowbeijing.cn)